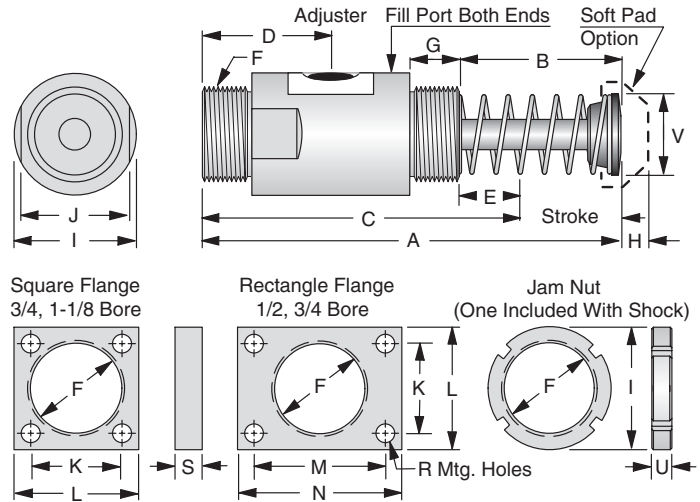


Gold Line™ Primary Series Shock Absorber Dimensions

Bore	Stroke		A	B	*C	D	*E
1/2	1"	in.	5.44	2.19	4.44	1.63	1.19
		mm	138.1	55.6	112.7	41.3	30.2
1/2	2"	in.	7.44	3.19	5.44	2.13	1.19
		mm	188.9	81	138.1	54	30.2
3/4	1"	in.	5.69	1.97	4.69	1.86	0.97
		mm	144.5	50	119.1	47.2	24.6
	2"	in.	7.69	2.97	5.69	2.36	0.97
	mm	195.3	75.4	144.5	59.9	24.6	
3/4	3"	in.	9.69	3.97	6.69	2.86	0.97
		mm	246.1	100.8	169.9	72.6	24.6
	2"	in.	8.88	3.38	6.88	2.75	1.38
	mm	225.4	85.7	174.6	69.9	34.9	
1-1/8	4"	in.	12.88	5.38	8.88	3.75	1.38
		mm	327	136.5	225.4	45.3	34.9
	6"	in.	17.75	8.25	11.75	4.75	2.25
	mm	450.9	200.6	298.5	120.7	57.2	

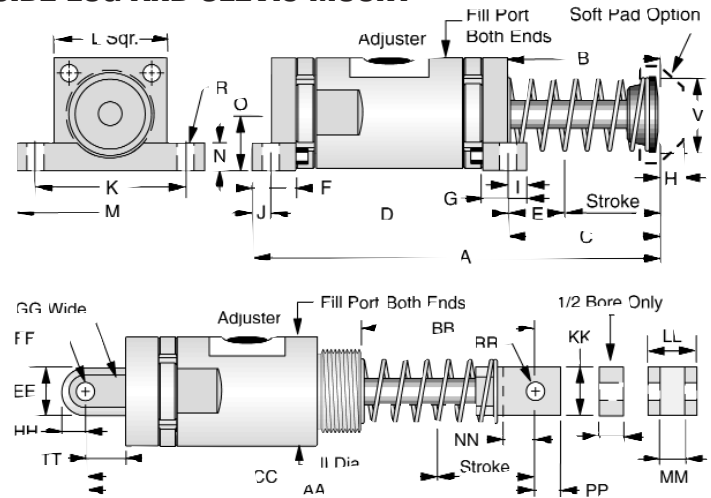
PRIMARY AND FLANGE MOUNT



Bore	Port	Rod	F	G	H	I	J	K	L	M	N	R	S	U	V	
1/2	1/16 NPT	in.	0.38	1-1/4-12 UNF	0.63	0.44	1.50	1.38	1.13	1.50	1.63	2.00	0.22	0.38	0.25	1.00
		mm	9.7	15.9	11.2	38.1	35.1	28.7	38.1	41.4	50.8	5.6	9.7	6.4	25.4	
3/4	1/8 NPT	in.	0.56	1-3/4-12 UN	0.91	0.69	2.25	2.00	1.63	2.25	2.38	3.00	0.34	0.50	0.38	1.50
		mm	14.3	23	17.5	57.2	50.8	41.4	57.2	60.5	76.2	8.6	12.7	9.7	38.1	
1-1/8	1/4 NPT	in.	0.81	2-1/2-12 UN	1.03	0.69	3.00	2.75	2.75	3.50	-	-	0.41	0.63	0.38	2.00
		mm	20.6	26.2	17.5	76.2	69.9	69.9	88.9	-	-	10.4	16	9.7	50.8	

Bore	Stroke		A	B	C	D	*E	AA	BB	*CC
1/2	1"	in.	5.94	2.19	1.94	3.75	1.19	6.56	2.62	5.56
		mm	151	55.6	49.2	95.3	30.2	167	66.6	141.2
1/2	2"	in.	7.94	3.19	2.94	4.75	1.19	8.56	3.62	6.56
		mm	202	79.8	74.6	121	30.2	217	91.9	166.6
3/4	1"	in.	5.94	1.97	2.06	3.38	0.97	7.84	2.78	6.84
		mm	151	50	52.3	85.5	24.6	199	70.6	173.7
	2"	in.	7.94	2.97	3.06	4.38	0.97	9.84	3.78	7.84
	mm	202	75.4	77.7	111	24.6	250	96	199	
3/4	3"	in.	9.94	3.97	4.06	5.38	0.97	11.84	4.78	8.84
		mm	252	101	103	136	24.6	301	121.4	224.5
	2"	in.	9.25	3.38	3.56	5.00	1.38	12.16	4.78	10.16
	mm	235	85.8	90	127	34.9	308.9	121	258	
1-1/8	4"	in.	13.25	5.38	5.56	7.00	1.56	16.16	6.78	12.16
		mm	337	136	141	178	39.6	410	172	308.9
	6"	in.	18.13	8.25	8.44	9.00	2.25	20.08	9.64	14.08
	mm	460	210	214	229	57.2	535.4	244.8	357.6	

SIDE LUG AND CLEVIS MOUNT



Bore	Port	Rod	F	G	H	I	J	K	L	M	N	O	R	V	
1/2	1/16 NPT	in.	0.38	0.50	0.50	0.44	0.25	0.25	2.38	2.00	2.75	0.50	0.88	0.23	1.00
		mm	9.7	12.7	12.7	11.1	6.4	6.4	60.3	50.8	69.9	12.7	22.4	5.6	25.4
3/4	1/8 NPT	in.	0.56	0.88	0.88	0.69	0.38	0.50	3.00	2.25	3.75	0.56	1.16	0.34	1.50
		mm	14.2	22.2	22.2	17.5	9.5	12.7	76.2	57.2	95.3	14.2	29.4	8.7	38.1
1-1/8	1/4 NPT	in.	0.81	1.00	1.00	0.69	0.56	0.69	4.88	3.50	5.63	0.75	1.75	0.41	2.00
		mm	20.6	25.4	25.4	17.5	14.2	17.5	124	88.9	143	19.1	44.5	10.3	50.8

Bore	Port	Rod	EE	FF	GG	HH	II	KK	LL	MM	NN	PP	RR	TT
1/2	1/16 NPT	in.	0.38	0.75	0.251	0.50	0.31	1.50	0.75	0.50	0.43	0.25	0.251	0.50
		mm	9.7	19.1	6.4	12.7	7.9	38.1	19.1	12.7	N/A	10.9	6.4	12.7
3/4	1/8 NPT	in.	0.56	1.00	0.501	0.75	0.50	2.25	1.00	1.00	0.52	0.88	0.501	0.83
		mm	14.3	25.4	12.7	19.1	12.7	57.2	25.4	25.4	13.2	22.4	12.7	21.1
1-1/8	1/4 NPT	in.	0.81	1.50	0.751	1.25	0.75	3.00	1.25	1.50	0.63	1.32	0.751	1.25
		mm	20.6	38.1	19.1	31.8	19.1	76.2	31.8	38.1	16.0	33.5	19.1	31.8

*Recommended length when an external mechanical stop is installed, add .06" to marked dimensions.

Gold Line™ Primary Series Shock Absorber Energy Capacity Ratings

Gold Line Energy Capacities (for applications 1 to 15 ft./sec. or 0.3 - 4.6 meters/sec.)											
Model Type	Bore X Stroke 1 in.=25.4mm	(WE) Effective Weight Minimum / Maximum		(E3) Maximum Energy / Cycle		(E4) Maximum Energy / Hour Internal Accumulator - External Accumulator				Mounting Strength 2.5 x E3 (Max) Stroke	
	in.	lbs.	Kg	in. lbs	Nm	in. lbs	Nm	in. lbs	Nm	lbs.	(N)
SALD 1/2x1 P	1/2x1	10-2,700	4.5-1225	1,350	153	750,000	84739	1,300,000	146881	3,375	15,000
SALD 1/2x2 P	1/2x2	21-5,400	9.5-2449	2,700	305	870,000	98297	1,400,000	158179		
SALD 3/4x1 P	3/4x1	20-18,000	9-8165	3,000	339	1,100,000	124284	1,600,000	180776	7,500	33,300
SALD 3/4x2 P	3/4x2	35-32,000	16-14515	6,000	678	1,300,000	146881	2,000,000	225970		
SALD 3/4x3 P	3/4x3	50-46,000	23-20866	9,000	1017	1,600,000	180776	2,400,000	271164		
SALD 1-1/8x2 P	1-1/8x2	120-50,000	54-22680	16,000	1808	1,500,000	169478	3,000,000	338955	20,000	89,000
SALD 1-1/8x4 P	1-1/8x4	160-100,000	73-45360	32,000	3616	2,000,000	225970	4,000,000	451940		
SALD 1-1/8x6 P	1-1/8x6	200-150,000	91-68040	48,000	5423	2,500,000	282463	5,000,000	564925		

*Select One Model Type From Above Column

How to Order Gold Line™ Primary Models

1. Select Model from Chart. 2. Change Prefix as Required. 3. Select Mount and Options as Required.
EXAMPLE: Self-contained Adjustable SALD Primary Type, 1-1/8" bore, 2" stroke with an internal accumulator, spring return, square flange and positive stop collar.

SALD **1-1/8x2** **P** **-SF-PSC** **Order No. = SALD 1-1/8x2 P-SF-PSC**

MODEL PREFIX **BORE x STROKE** **PRIMARY** **MOUNT-OPTIONS**

PREFIX	Description		PRIMARY Mount and Option Description
SALD -	Internal accumulator, spring return	None	Basic Mounting Threads and one Jam Nut
ALDA -	Internal accumulator, mechanical return	-SF	Square Flange - (not available 1/2 bore)
ALDS -	External accumulator, spring return	-RF	Rectangle Flange - (not available 1-1/8 bore)
ALD -	External accumulator, air or mech. return	-L	Side Lug Mount
		-C	Clevis Mount
		-Z	Blind-end Air Cylinder Mounting
		-SP	Soft Pad - not used with -PSC, -MSC, -FSC, C, or -Z Option
		-PSC	Positive Stop Collar - for Basic or Rear Mount Only
		-FSC	Flanged Stop Collar - for Basic Mount Only (n/a 1-1/8 bore)
		-MSC	Mounting Stop Collar - for Basic Mount Only
		-RK	Retention Kit - Only used with "MSC" option
		-V	Viton Seals
		-FRFV	Fire Resistant Fluids
		-LVO	Low Viscosity Oil
		-MVO	Medium Viscosity Oil
		-HVO	High Viscosity Oil
		-ATF	Automatic Transmission Fluid
		-SG	Sight Gauge
		-PS-1	MINI (AC - DC) Proximity Switch
		-PS-2	MICRO (AC - DC) Proximity Switch
		-PS-2	MICRO (DC) Proximity Switch (Metric - SATURN only)

*ENERTROLS recommends that you select a model with 20% more capacity than your calculations indicate necessary. This extra capacity allows for changes if weight, velocity, or cycle rates should increase in the future.

Gold Line™ Velocity Range 1-15 ft./sec. or 0.3 - 4.6 meters/sec.
 For low velocities, see SILVERLINE™ data pages 40-41, any other out-of-range velocities, consult factory.

All standard units are prefilled at factory with ISO 46 AW oil.

NOTE: Positive Stop Systems Dimensions see pages 34-35.

Accessory Items for Primary Adjustable or Mid-Size Non-Adjustable Models

1/2 Bore or 33xx Model Rectangle Flange P/N 3125-07005	3/4 Bore or 45xx Model Jam Nut P/N 3136-09005
1/2 Bore or 33xx Model Jam Nut P/N 3125-09005	3/4 Bore or 45xx Model Soft Pad P/N 3136-19015
1/2 Bore or 33xx Model Soft Pad P/N 3125-19015	1-1/8 Bore, 64xx or 64xxx Model Square Flange P/N 3141-08005
3/4 Bore or 45xx Model Square Flange P/N 3136-08005	1-1/8 Bore, 64xx or 64xxx Model Jam Nut P/N 3141-09005
3/4 Bore or 45xx Model Rectangle Flange P/N 3136-07005	1-1/8 Bore, 64xx or 64xxx Model Soft Pad P/N 3141-19015

Accessory Items can be ordered individually or specified as part of the complete Shock Absorber Model Number.

Enertrols®

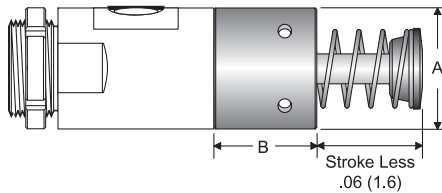
Positive Stop Systems

Gold Line™ and SILVERLINE™ Primary Mount Dimensions

These systems are the strongest, least expensive and best way of providing a tamper-proof positive stop and a precision fixed work-positioning point at the same time. Enertrols uses a hardened steel construction (Rc 55-58 standard on all models) that will not deform or change with heavy cycling installations

PSC™ POSITIVE STOP COLLAR

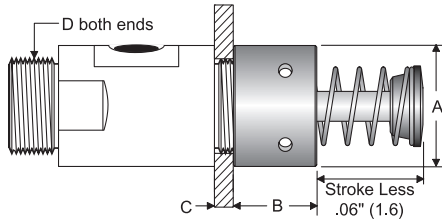
Provides integral positive stop for rear-mounted Primary Model Shock Absorbers.



Bore		A	B	Part Number
1/2	in mm	1.50 38.1	1.86 47.2	3125-34010
3/4	in mm	2.25 57.2	1.91 48.4	3136-34010
1 1/8	in mm	3.00 76.2	2.45 62.3	3141-34010 (1, 2, 4" stroke)
1 1/8	in mm	3.00 76.2	3.32 84.3	3141-34106 (6" stroke)

MSC™ MOUNTING STOP COLLAR

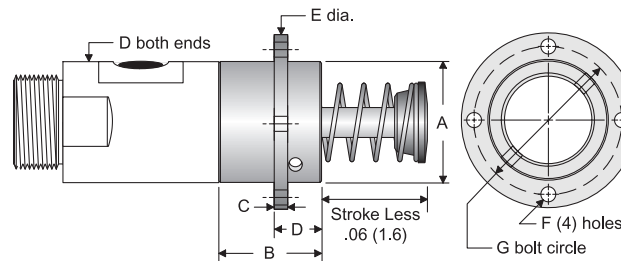
Through-hole front-mount plus integral, positive stop for Primary Model Shock Absorbers.



Bore		A	B	C	D	Part Number
1/2	in mm	1.50 38.1	1.63 41.3	0.25 6.4	1.25 31.8	3125-34000
3/4	in mm	2.25 57.2	1.56 39.7	0.38 9.5	1.75 44.5	3136-34000
1 1/8	in mm	3.00 76.2	1.97 50	0.50 12.7	2.50 63.5	3141-34000 (1, 2, 4" stroke)
1 1/8	in mm	3.00 76.2	2.83 71.6	0.50 12.7	2.50 63.5	3141-34107 (6" stroke)

FSC™ FLANGED STOP COLLAR

Flange front-mounting and integral, positive stop for Primary Model Shock Absorbers.



Bore		A	B	C	D	E	F	G	H	Part Number
1/2	in mm	1.50 38.1	1.86 47.2	0.25 6.4	1.50 38.1	2.50 63.5	0.28 7.1	2.00 50.8	1.5 38.1	3125-34510
3/4	in mm	2.25 57.2	1.91 48.4	0.25 6.4	2.25 57.2	3.25 82.6	0.28 7.1	2.75 69.9	2.25 57.2	3136-34510
1 1/8	in mm	3.00 76.2	2.45 62.3	0.38 9.5	3.00 76.2	4.25 108	0.28 7.1	3.50 88.9	3.00 76.2	3141-34510 (1, 2, 4" stroke)